



BEAULIEU RIVER

BUCKLER'S HARD YACHT HARBOUR

GOLD ANCHOR
ANCHOR ANCHOR ANCHOR ANCHOR

The natural haven where the New Forest meets the Solent



2023 TIDE TIMES & INFORMATION

Operating along the south coast, we offer a range of marine valeting and boat management services which can be tailored to suit your individual requirements, from sailing boats to superyachts.



ANTIFOULING
COPPERCOAT
MULTI STAGE POLISH & WAX
FULL BOAT REFITS
REGULAR WASH DOWNS
TEAK RENOVATION

GRP REPAIRS
CERAMIC COATINGS
PROP BURNISHING
COVERS- CLEAN & REPROOF
UPHOLSTERY - CLEAN & REPAIR
INTERIOR VALET

078811 07560 | 07780 705289

matt@iboatvalet.co.uk
www.iboatvalet.co.uk



CONTENTS

Welcome	4
Meet the Team	5
Marina Layout & Facilities	6
Our Boatyard	8
Boat Repair & Maintenance Services	9
Visiting	10
Waste & Recycling	12
Outdoor Dining	14
Chandlery/Reception	15
Staying Safe on the River	16
Paddle Sports	17
Join Us	21
Finding Us	24
Tidal Information & Times	25-33
Things to do Ashore	35
Buckler's Hard Village	36
Walks from Buckler's Hard Yacht Harbour	38-41
Visiting Beaulieu	42
Help Protect our Wildlife	44
Photo Competition	46
HMS Agamemnon Exhibition	48
Birds on the River	52
Useful Contact Numbers	54

Buckler's Hard Yacht Harbour | Beaulieu
Hampshire | SO42 7XB

01590 616200 | harbour.office@beaulieu.co.uk
beaulieuriver.co.uk

VHF Channel 68 "Beaulieu River Radio"

THE
BRITISH
YACHTING
AWARDS 2022
WINNER

Marina of the Year

WELCOME TO THE BEAULIEU RIVER & BUCKLER'S HARD YACHT HARBOUR



Welcome to the Beaulieu River, which forms the south-eastern edge of the Beaulieu Estate and is one of the few privately-owned estuaries in the world. It is an ideal place from which to sail in the Solent or visit for a short stay and, if you seek the pleasures of the countryside, the Beaulieu Estate and New Forest National Park are on your doorstep.



The river has been in the custodianship of my family since 1538, when Henry VIII closed Beaulieu Abbey and sold its lands to my ancestor Thomas Wriothesley. The monks had settled at Beaulieu partly because the river ensured easy transit between the Abbey and points further afield, and so it remains today.

Whilst the river retains many of the qualities it has had for centuries, the facilities continue to change as we seek to meet the expectations of you, our mooring-holders and visitors. Following the recently completed reconfiguration of the yacht harbour, my gratitude to everyone who made it possible for the river to win the Marina of the Year award, notably the harbour staff and those who kindly voted for us.

Finally, my thanks to all those who submitted pictures for the 2022 photographic competition. We received another good raft of entries from which I have selected a number of striking images to feature in this booklet.

Montagu of Beaulieu

MEET THE TEAM

We pride ourselves on providing a professional and friendly service to all visitors, with a personal touch that is sometimes missing from larger marinas. We are delighted to have this recognised in 2022 by winning two awards. Team member John Selman won The Yacht Harbour Association's Employee of the Year, and the marina won the British Yachting Award for Marina of the Year. Whether you're here for a few hours, a day or longer, please let us know if we can help with anything.



Wendy Stowe
Harbour Master



Adam Lewis
Deputy Harbour Master



The Beaulieu River team at the 2022 British Yachting Awards.

MARINA LAYOUT & FACILITIES



1 Marina Reception & Chandlery

Open from 8am, 7 days a week. Stock includes a good range of chandlery items, bottled gas and a small selection of groceries including fresh milk, bread, confectionery, ice, alcohol and newspapers at weekends.
01590 616200 | harbour.office@beaulieu.co.uk
chandlery@beaulieu.co.uk

2 Engineering Workshop

On-site marine engineer Alex Cobb offers inboard and outboard engine service and repair.
07717 155871 | info@marine-tec.co.uk

3 Wash Down Area

4 Lavatories, Showers and Launderette

Open at all times* for use by berth-holders and visitors. Includes a fully-equipped coin-operated launderette. Outside shower and sinks available. Facilities for disabled visitors.

*the showers close at night for cleaning

5 BH Boat Sales

Sole-appointed yacht brokers for the River.
01590 616316 | sales@bhboatsales.com

6 Rubbish Disposal

Skips and recycling bins are located outside the harbour office.

7 Event Area/Resident Parking

Location for pop-up catering units which will be open every weekend from Easter to September.

8 Pump-out Point

Operated by a token which can be collected from the marina reception.

9 Fuel and Water

Fuel and fresh water are available from the fuel pontoon, which is open until 4.30pm (4pm winter). Fresh water is also available in the marina.

10 Master Builder's House Hotel

Enjoy a meal in the Riverside Restaurant. The hotel offers 26 guest rooms, some with river views. Advance booking recommended.
01590 616253 | themasterbuilders.co.uk

11 Buckler's Hard Visitor Centre and Museum

Learn about the 18th century village where ships for Nelson's Navy were built.

12 The Captain's Table

Eatery serving hot and cold refreshments.
01590 616293

Visitors with Disabilities

If you need assistance, please do not hesitate to contact one of the river staff. Please note: ramp access to the marina is steep at low tide.

DOCK MASTER TEAM

Matt Thomas



Jon Wild



Adrian Foulkes



Phil Lang

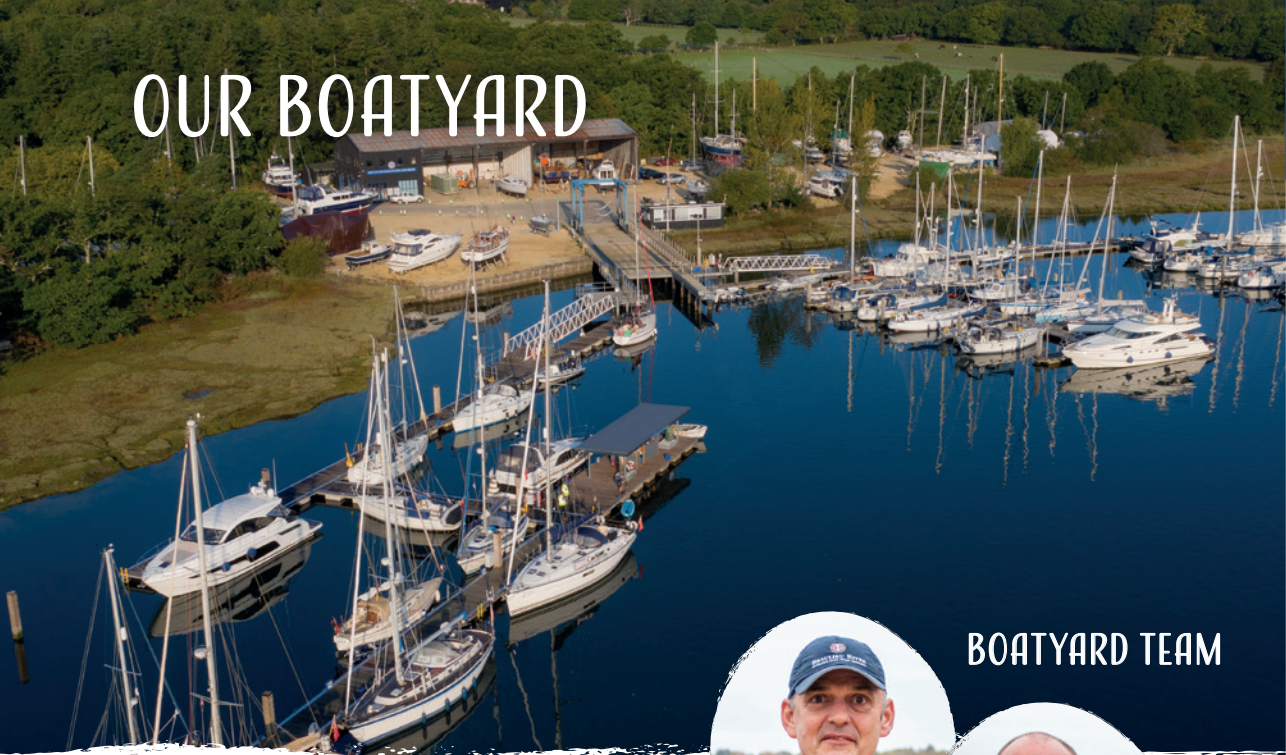


Tony Sheppard



Rob Seymour

OUR BOATYARD



BOATYARD TEAM



Paul Bishop



Rob Seymour



Chris Wilson



Mike Bowers

Buckler's Hard Yacht Harbour is pleased to offer a competitive range of boatyard services all year round.

The boatyard operates a 40 ton hoist, which can lift vessels up to 18m in length. The boatyard team can lift, pressure wash and block ashore vessels in the boatyard. In addition, there is a telehandler with a 17m reach which can be booked for the stepping and unstepping of masts, plus a boat mover and new cradles to suit all requirements. Onsite facilities include electricity, water and a chandlery.

Under cover storage is also available at a competitive price for those requiring a more specialised service.

We continue to invest in upgrading our boatyard facilities including the resurfacing of our roadway and the ongoing purchase of new cradles.

A list of approved suppliers can be instructed to work in the boatyard.

Please refer to www.beaulieuriver.co.uk/boatyard for a list of prices.

DID YOU KNOW...?

Resident berth and mooring-holders benefit from 10% off all boat lifts and launches as well as 30 days' free storage any time of year*.

*Excludes undercover storage and survey lift. Please check www.beaulieuriver.co.uk/boatyard for a list of terms and conditions.

BOAT REPAIR & MAINTENANCE SERVICES

The Buckler's Hard boatyard is operated on an open yard policy basis.

Boat owners are welcome to use suppliers of their choice, provided they comply with our guidelines, register with the Marina Reception and pay a small daily charge. Alternatively, we have selected a number of approved suppliers who are known for their high standards of service and are pre-registered to deliver services at Beaulieu River and the boatyard. The listings below are their advertisements. If you can't find the service you are looking for here, we will be happy to help you find the right specialist for your needs; please ask.

Boat Builders & Boat Maintenance

Cooks Maritime Craftsmen & Yacht Surveys

Fully qualified and insured. Pre-purchase, insurance surveys. A wide range of repairs and refits carried out and craft maintained, from internal joinery, GRP, and timber repairs to boat-washing, antifouling and painting.
07952 955906 / 01590 675521
www.cooksmaritimesurveys.com
cooksmcraftsmen@gmail.com

Jeremy Rogers

Boat repair, maintenance and refurbishment.
01590 646780
production@jeremyrogers.co.uk
www.jeremyrogers.co.uk

ROC Marine Solutions Ltd

System engineering, antifouling services, running gear check & cleaning services, complete yacht refit management, marine woodwork and carpentry, marine exterior and interior valeting service.
023 8251 4436
info@rocmarinesolutions.co.uk
www.rocmarinesolutions.co.uk

Yacht Rigging

Ocean Rigging

All-round ocean rigging service.
01590 676292 | info@oceanrigging.co.uk
www.oceanrigging.co.uk

Marine Electronics

S.D. Electronics

Marine electronics and electrical engineer. System install, repair electrical and electronic systems. Mast wiring, connections and servicing masthead units, checking batteries, repair of electric winches and bow thruster. Alternator and starter motor repairs.
07551 949083
Eastagh.pipistrelle@talktalk.net

Marine Engineers

Marine Tec Ltd

Inboard and outboard engine service and repair.
07717 155871 | info@marine-tec.co.uk

Valeting Services

Solent Yacht Care Limited

Specialist valeting services including polishing and waxing, teak renovation, antifouling, anode replacement, for sale preparation, regular exterior wash programme and general maintenance. Approved AGlaze applicators. Boracol stockist. Fully insured.
07917 543877 / 01590 719587

enquiries@solentyachtcare.co.uk

www.solentyachtcare.co.uk

IboatValet

Boat valeting and management services.
07881 107560 | matt@iboatvalet.co.uk
www.iboatvalet.co.uk

Aqua Yachts

Yacht valeting and maintenance services.
07950 928182 | info@aquayachts.co.uk
www.aquayachts.co.uk



VISITING

Our new visitor berths on the South Visitor Pontoons offer convenient walk-ashore positions, electricity and water. Please report to the Marina Reception upon arrival. The Marina Reception can also be contacted via VHF channel 68 Beaulieu River Radio or via telephone 01590 616200.

To avoid disappointment, we recommend that visitor walk-ashore berths are booked with advance payment by emailing the Harbour Office. River moorings are available on a first come, first served basis; please remember that a dinghy will be required to get ashore.

Rates from 1st April to the end of October 2023 for visiting yachts, per vessel, per metre, per night. All visiting vessels will be berthed on the designated visitor pontoon. Subject to availability.

	Overnight	Short Stay*
Walk Ashore (includes electricity)	£4.75 per metre per night	£2.25 per metre
River	£2.75 per metre per night	£1.50 per metre
Anchorage†	£10.00 per boat	£8.00 per boat

* Short stays are a maximum of 4 hours with the overnight fee applying after 3:30pm. Overnight visitors should vacate their mooring/berth by midday. Guests of visiting yachts are welcome to come to the marina and park their car. There is a daily parking fee of £5.

† To protect the sensitive habitat of the river, anchoring is only permitted between piles 20 and 22. Does not include use of marina facilities.

The marina is staffed from 08:00–20:30 in summer and 08:00–16:30 in winter, with security outside of these hours.

Find out more:



VISITOR BUOYS

Located just 10 minutes from the entrance, our designated visitor buoys (moorings 1 - 8) have open views of the Solent and are suitable for vessels up to 12 metres.

A limited number of river moorings* are available throughout the river and can be identified by a yellow pickup buoy marked with a black V. Remember a dinghy will be required to get ashore.

*Moorings above the marina are only suitable for vessels up to 12 metres and with a shallow draft. Mid river pontoons are unavailable for visitors.



VISITOR PONTON TEAM

Oliver Rickard



Tim Hubble



John Selman



WASTE & RECYCLING

The Beaulieu River is a beautiful place. Please help us keep it this way by following our waste and recycling guidelines.

Waste and recycling facilities can be found by the harbour office. Please make sure you use the correct bin. Contamination reduces the number of items we can recycle and may cause health and safety problems. If you are in doubt or need assistance, please do not hesitate to ask one of the harbour staff.

Recycling

Bright blue bins with mixed recycling labels should be used for cans, aerosols, plastic bottles, paper and card. Green bins should be used for glass bottles.

General waste

Non-recyclable waste should go into the bins labelled general refuse. All waste must be compactable and must not be hazardous.

Pump-out service

There is a pump-out facility near the fuel berth. Please ask at the chandlery/marina reception for details before operating.

International food waste

If arriving from outside the UK, any food waste must be taken home. Alternatively, please speak to a member of staff. Do not dispose of in bins.

Photo by Stuart Burns (above), shortlisted for the 2022 photographic competition.

Oil, paint cans, fuel & oil filters & engine batteries

Please ask harbour staff for details of how to deal with these.

Flares

Please contact www.thegreenblue.org.uk for your local flare disposal facility.

Hazardous waste

We are unable to accept hazardous waste including, though not limited to, fuel, liquid chemicals, fuel tanks, any absorbent material used to clear oil, fuel or paint spillages, compressed gasses or gas containers, clinical waste, mattresses, tyres.

The nearest hazardous waste disposal service is in Marchwood.

Please note that the following may not be discharged into the river:

- black water
- oil/oily residue
- waste
- plastics
- food



Sole appointed Yacht Brokers to the Beaulieu River

Thinking of selling your boat? Please pop in to the BH Boat Sales cabin to discuss. A friendly and professional service awaits.



Buckler's Hard Yacht Harbour,
Beaulieu, Hampshire SO42 7XB
01590 616316
sales@bhboatsales.com

MOBILE MARINE ENGINEER

Whether you own a 6ft tender or a 60ft luxury craft, Power or sail, we can cover most of your mechanical needs.

All makes and models of inboard and outboard engines

Stern drives

Basic Marine Plumbing

Basic servicing to full rebuilds

Stern gear; propellers, prop shafts, cutlass bearings.

Replacing skin fittings and seacocks

Re-powering and maintenance packages

Installations and Servicing of marine generators.

Installation of holding tanks and toilet systems.

If you would just like to discuss the options that are available to you, Please do not hesitate to contact us.

Call Colin Diffey on **07738 915012**
info@riverbankmarineservices.co.uk
www.riverbankmarineservices.co.uk



**Riverbank
Marine Services**

NEW OUTDOOR DINING AREA TO OPEN IN 2023

Following the recent successes of the pop-up restaurants, we are creating a new outdoor social space for berth and mooring holders to enjoy a glass of something cold and a bite to eat after a busy day on the water.

Opening from Easter 2023, this space will welcome a variety of local businesses to set up shop on the banks of the Beaulieu River. From seafood to a glass of rosé, they'll be something for everybody's taste buds.

The Solent Cellar, Lymington's independent wine merchant, will be returning for 2023, hosting a pop-up bar on the water's edge throughout summer. The team will be showcasing a handpicked selection of reds, whites, and of course rosés. Each week will also feature a different beer from a local brewery, as well as a local craft gin. A selection of soft drinks and bar snacks will also be available. The bar will be open every Friday and Saturday, starting from the beginning of the Easter holidays until the end of September. During July and August they will also be open on a Thursday night.

The Super Brothers will also be returning, bringing fine dining to your doorstep. Guests can indulge in a selection of freshly prepared pizzas throughout July and August, whilst catching up with local friends and family.

Straight from the Solent, New Forest Fish and Shellfish will be open for business from Easter – September, offering guests the very best fresh fish and shellfish, using low impact and selective fishing methods. Breakfast will be served every Saturday and Sunday, whilst evening meals will be available every Friday and Saturday night.

Due to the popularity of the pop-up restaurant in 2022, this outdoor area will be open exclusively to permanent berth and mooring holders, and visitors to the Beaulieu River.

For further information including opening hours, please visit our website or scan the QR code below.



CHANDLERY & RECEPTION

The chandlery building is also home to the marina reception, making it the one-stop shop for all your boating supplies and queries. Do pop in and see the team - they're always happy to help.

Product lines include rope, anti-fouling products, stainless steel hardware, Calor and camping gas. Groceries include fresh milk, bread, fresh pastries, orange juice, confectionery, wine/beer, basic food and drinks and toiletries. Newspapers are available at weekends during the season and can be enjoyed at the seating area with a hot drink or ice cream. Your four-legged friends will also be wagging their tails with delight at the dog ice cream and other tasty treats, canine life jackets and eco-friendly toys!

If you'd like to order an item not in stock, please speak to one of the team.

Open 7 days a week
chandlery@beaulieu.co.uk | 01590 616200

CHANDLERY & ADMIN TEAM



Amanda Daniel



Gill Martin



Angela Shelley



Sarah Gilmore

STAYING SAFE ON THE RIVER

The Beaulieu River team work hard to ensure all visitors and vessels remain safe when using the river. Please help us to achieve this by observing the following safety rules.

Obligations

- ⚓ wear lifejackets.
- ⚓ keep your speed below the maximum of 5 knots to ensure minimum wash throughout the river.
- ⚓ keep to the starboard side of fairway.
- ⚓ wear kill cords where fitted.
- ⚓ ensure dogs are kept on leads at all times.

Not permitted

- ⚓ swimming, jet-skiing, water-skiing or board sailing.
- ⚓ securing dogs or children to canoes or kayaks.
- ⚓ mooring onto navigation buoys, beacons or marks.
- ⚓ underwater diving activities without permission from the Harbour Master.
- ⚓ operating your vessel whilst intoxicated.
- ⚓ the flying of drones.

When arriving

- ⚓ from outside the UK you must call the National Yachtline (0300 123 20212) on arrival and complete a pleasure craft report service at www.gov.uk/government/publications/sailing-a-leisure-craft-to-and-from-the-uk
- ⚓ if you have animals on board, you must have the correct paperwork from an authorised port of entry before entering the UK.
- ⚓ all commercial vessels, vessels over 20m, and vessels not under command, restricted in ability to manoeuvre, or towing another vessel or structure, are requested to give notice of their movements by calling Beaulieu River Radio on VHF channel 68.

Man overboard

- ⚓ in a 'man overboard' situation, call for help and then try to assist but without putting yourself in danger. There are emergency ladders on all marina and river pontoons. Call channel 68.

Slipway

- ⚓ pre-book your launch using our online booking system at beaulieurriver.co.uk.
- ⚓ check weather and tidal conditions. We advise against launching and recovering in the hours of darkness.
- ⚓ the slipway should not be used 2 hours either side of low water due to steep drop-off (other than for paddle craft).
- ⚓ do not block access; rig your boat away from the slipway.
- ⚓ be aware of pedestrians and other users of the slipway.
- ⚓ attach a safety line to your trailer.
- ⚓ remember to park your vehicle in the designated car park & not in the boat park
- ⚓ never stand behind a boat whilst it is being launched or recovered.
- ⚓ if you are going to leave your vehicle attached to the trailer whilst launching, switch off the engine, leave in gear, and make sure the handbrake is fully applied.
- ⚓ when parking a boat and trailer in the dinghy park, check that both are secure.
- ⚓ pontoons are only to be used for the launching and recovery of vessels.

Pontoon

- ⚓ take care on the pontoons when it is wet, frosty or icy.

PADDLE SPORTS

The Beaulieu River is a Site of Special Scientific Interest and home to a remarkable variety of wildlife. Due to the protected status of the riverbanks, the slipway at Buckler's Hard is the only place you are permitted to launch or recover canoes, kayaks and paddleboards on the river. Please help us maintain the natural beauty of the river by proceeding with caution and consideration.

For the safety of all our users, we do not permit launching or landing after dark.

Launch & Recover Service Fees

Paddlecraft (canoe, kayak, paddleboard)	£10 per vessel (includes parking for 1 car)
Any boat (regardless of power or size)	£25 per vessel (includes parking for 1 car)

To book and pay for your launch and car parking, please use the pre-booking system on our website: beaulieurriver.co.uk/visiting/slipways-launch-fees/

Paddle safely and responsibly by observing these rules

- ⚓ if you are new to paddle sports, we encourage you to take lessons first.
- ⚓ do not secure children or dogs to your canoe, kayak or paddleboard.
- ⚓ label your canoe, kayak or paddleboard so that if you get separated, rescue teams can reunite you.
- ⚓ only use one paddleboard per person. Don't be tempted to share, particularly with children.
- ⚓ observe navigational rules – keep right and give other users space.
- ⚓ do not allow dogs to run free along the river bank or foreshore.
- ⚓ respect other river users and remember you are not always visible to other vessels.
- ⚓ keep your distance from wildlife and keep noise to a minimum.
- ⚓ keep to the main channel (marked with red and green posts). Do not enter the creeks.
- ⚓ do not drink alcohol and paddle.
- ⚓ check local weather forecasts and tidal predictions; tidal currents can be hazardous and the wind can easily blow paddleboards off course. Remember that the upper reaches of the river do dry out and that the ebb tide is stronger.
- ⚓ take all litter home.
- ⚓ you may off load your car at the slipway, but you must return it to the car park before going afloat.
- ⚓ do not land on private jetties or along the riverbank.
- ⚓ wear a correctly-sized buoyancy aid.
- ⚓ landing is strictly prohibited on Gull Island.
- ⚓ ensure you have a waterproof mobile phone or VHF radio.
- ⚓ a full paddle sports guide is available online.
- ⚓ bring a whistle in case of emergency.
- ⚓ parking is available in the Marina only.

Please report any incidents or concerns to the Harbour Master's Office via VHF channel 68 **Beaulieu River Radio** or by calling 01590 616200. Out of hours call 999.



coast
portsmouth
langstone southampton
yarmouth hurst economy
climate newtown
protect beaulieu medina
marinelife chichester bembridge
coves keyhaven
development lymington view
pollution environment
planning

Solent Protection Society

Watching over the Solent's harbours, estuaries and coastline since 1956



solentprotection.org

Registered Charity 1154317

info@solentprotection.org

*It's all about
belonging.*



You're always guaranteed a warm welcome at the Royal Southampton Yacht Club on the Beaulieu River, and becoming a Member couldn't be simpler! If you'd like to know more, pop in for a chat and enjoy a drink on us!

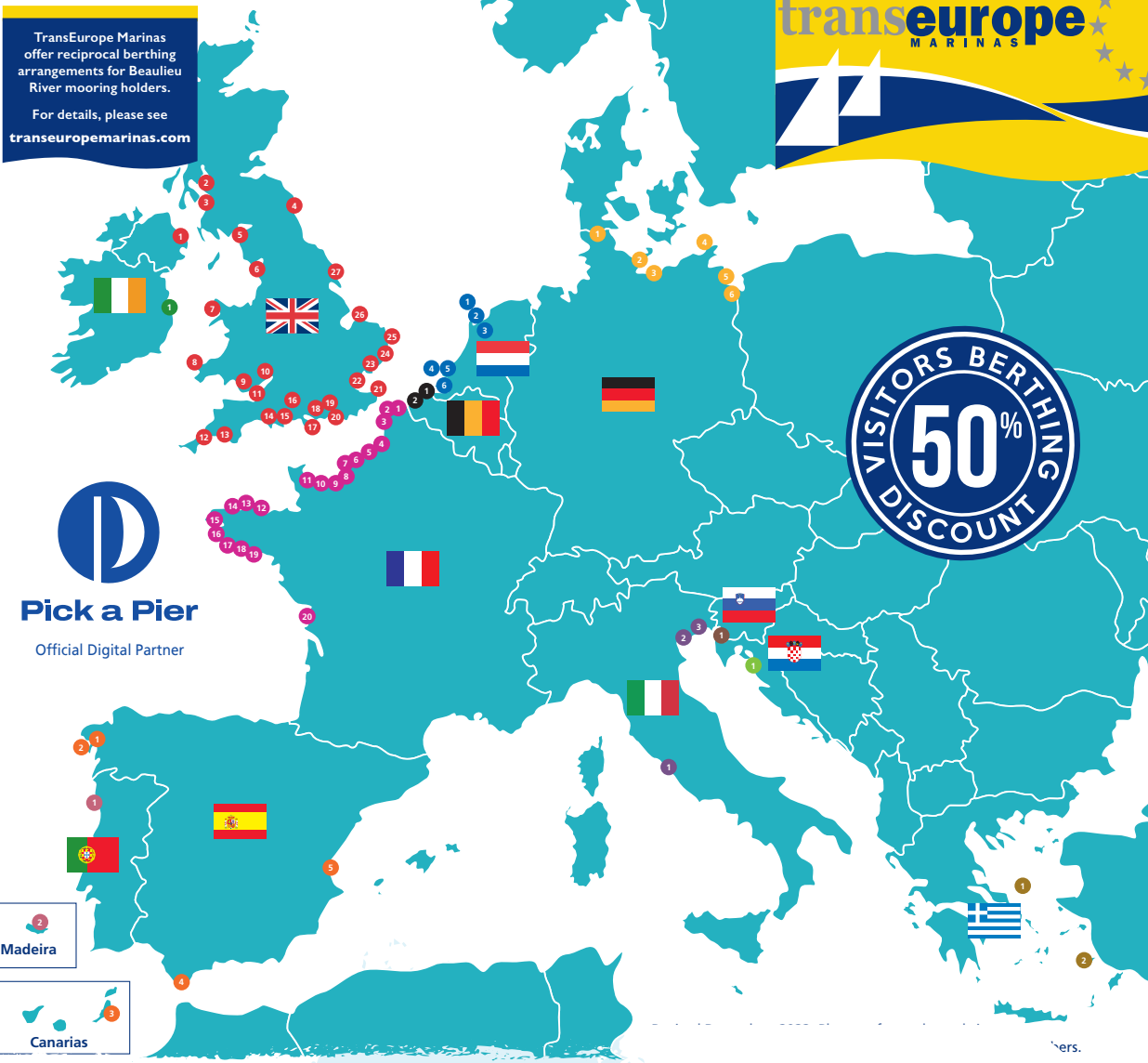
With membership packages available immediately, a sense of belonging starts here.

023 8022 3352 • gins@rsyc.org.uk • www.rsyc.org.uk

Gins Clubhouse, St. Leonards, Beaulieu, Hampshire. SO42 7XG



TransEurope Marinas offer reciprocal berthing arrangements for Beaulieu River mooring holders. For details, please see transeuropemarinas.com



Pick a Pier
Official Digital Partner

VISITORS BERTHING
50%
DISCOUNT

Madeira

Canarias

UK

1. Bangor Marina
2. Rhu Marina
3. Troon Yacht Haven
4. Royal Quays Marina
5. Whitehaven Marina
6. Fleetwood Haven Marina
7. Conwy Quays Marina
8. Neyland Yacht Haven
9. Penarth Marina
10. Upton Marina
11. Portishead Marina
12. Mylor Yacht Harbour
13. Mayflower Marina
14. Poole Quay Boat Haven
15. Buckler's Hard Yacht Harbour
16. Town Quay Marina
17. Cowes Yacht Haven
18. Royal Clarence Marina
19. Emsworth Yacht Harbour
20. Birdham Pool Marina
21. Dover Marina
22. Gillingham Marina
23. Farnbridge Yacht Haven

24. Tollesbury Marina
25. Fox's Marina
26. Brundall Bay Marina
27. Hull Marina

France

1. Dunkerque
2. Calais
3. Boulogne-sur-mer
4. Saint-Valéry Sur Somme
5. Dieppe
6. Saint-Valéry en Caux
7. Fécamp
8. Le Havre Plaisance
9. Port-Deauville
10. Dives-Cabourg-Houlgate
11. Ouistreham/Caen
12. Saint-Quay Port d'Armor
13. Perros-Guirec
14. Roscoff
15. Marinas de Brest
16. Douarnenez-Tréboul
17. Locudy
18. Port la Forêt

Germany

21. Sonwik Marina
22. Ancora Marina
23. Marina Boltenhagen
24. Marina Wiek auf Rügen
25. Naturhafen Krummin
26. Lagunenstadt Ueckermünde

Republic of Ireland

1. Malahide Marina

Netherlands

2. Marina Den Oever
3. Jachthaven Waterland
4. Jachthaven Wetterwille
5. Marina Port Zélande
6. Jachthaven Biesbosch
7. Delta Marina Kortgene

Belgium

1. VNZ Blankenberge

Spain

1. Marina Combarro
2. Nauta Sanxenxo
3. Puerto Calero
4. Alcadesa Marina
5. Pobra Marina

Portugal

1. Douro Marina
2. Quinta do Lorde Marina

Italy

1. Porto Romano
2. Venezia Certosa Marina
3. Marina del Cavallino

Croatia

1. Marina Punat

Greece

1. Linariá Marnia
2. Kos Marina



JOIN US

Experience the beauty and tranquility of the Beaulieu River and visit us either for a day, overnight or perhaps even longer.

With a five Gold Anchors accreditation, the Buckler's Hard Yacht Harbour offers a sheltered setting for a range of fully-serviced marina berths, while the scenic reaches of the Beaulieu River provide a peaceful setting for river moorings.

Yachts of up to 20m can be comfortably accommodated and the on-site boatyard facilitates repair services, as well as lift-out, washdown and storage services all year round.

As well as a friendly service from experienced staff, **permanent berth and mooring-holders** can enjoy the following benefits:

- 🚢 30 days' free storage and 10% off lift and launch throughout the year.
- 🚢 10% off fuel.
- 🚢 reciprocal berthing arrangements with other marinas through membership of TransEurope.
- 🚢 free WiFi throughout the marina.
- 🚢 ample on-site parking.
- 🚢 CCTV and out-of-hours on-site security.
- 🚢 conveniently located boatyard services.
- 🚢 special seasonal offers on boatyard services.
- 🚢 luxury lavatories, showers and a launderette.
- 🚢 fuel jetty.
- 🚢 pump-out service.
- 🚢 on-site chandlery/grocery shop, open seven days a week.
- 🚢 professional on-site yacht broker.
- 🚢 social events for mooring holders.
- 🚢 pop-up bars and food vendors every weekend from Easter through to the end of September.
- 🚢 free entry to Buckler's Hard Museum for mooring-holders.
- 🚢 unlimited family tickets to the Beaulieu visitor attraction and National Motor Museum (family = up to 3 children and 2 adults).
- 🚢 10% discount on food and drink available at The Master Builder's House and restaurant with the Beaulieu River Privilege Card.
- 🚢 regular newsletter to keep you updated.



The craftsmanship's ours,
the adventure's all yours!

Fully equipped boat yard in the Lyminster Yacht Haven specialising in all aspects of top quality yacht refurbishment. As well as building new Contessa 32s we repair and refurbish all boats be they traditional or modern, power or sail.

Come and talk to our friendly and expert team about your next project.

🌐 jeremyrogers.co.uk ☎ +44(0)1590 646780 ✉ production@jeremyrogers.co.uk

COOKS MARITIME CRAFTSMEN & YACHT SURVEYS Boat Builder / Surveyor

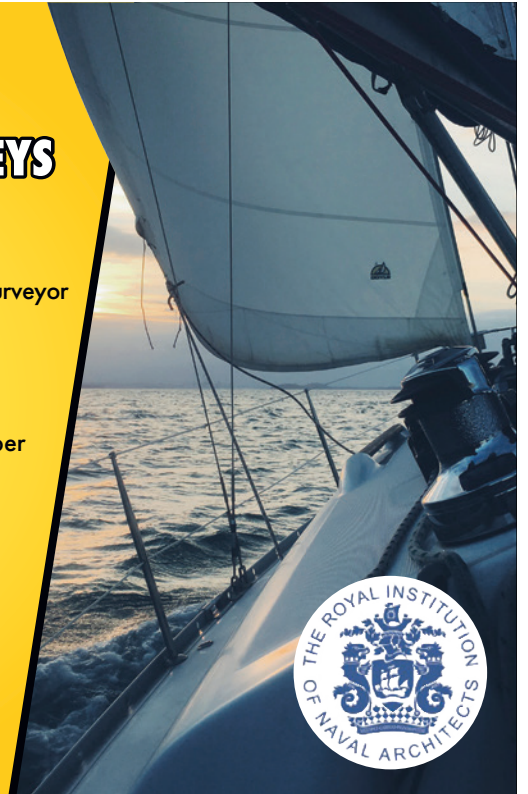
Fully Qualified and Insured. Boat Builder and Marine Surveyor

Providing High Quality Craftsmanship

A wide range of repairs and re-fits carried out and craft maintained, from internal joinery, GRP, and timber repairs to boat washing, antifouling and painting

Local workshop at Lyminster Yacht Haven

07952 955906 / 01590 675521
cooksmcraftsmen@gmail.com
www.cooksmaritimesurveys.com



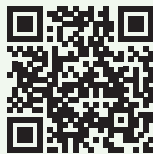
THE CAPTAIN'S TABLE AT BUCKLER'S HARD



Eat in or take away, also available for private functions, contact bucklershard@caterleisure.co.uk or 01590 612461



SCAN THE QR CODE BELOW TO WATCH A VIDEO ON NAVIGATING THE RIVER:



FINDING US

BY BOAT

The Beaulieu River is centrally located on the Solent. When approaching from the east, keep the lit south cardinal to starboard off Stone Point and steer to the vicinity of a lit, yellow special buoy close to the bearing to run in on. The bearing to run in on is 324° guided by the transit marks, the front mark is port post No. 2 and the back mark is Lepe House.

The Buckler's Hard Yacht Harbour is a pleasant 3.5 nautical mile cruise upstream. Please report to the Harbour Master's Office when the Marina is in sight using VHF channel 68 and call sign *Beaulieu River Radio*.

BY CAR

We are 25 minutes from the M27 with easy access to the main south coast cities, the M3 and London. There is ample parking for customers. Find us via satnav using SO42 7XB and enjoy your journey through the New Forest. Please call the Harbour Office on arrival to receive the access code for the barrier.

BY TRAIN

The closest main line railway station is eight miles away in Brockenhurst, with a regular service running between London Waterloo and Weymouth. A taxi from Brockenhurst to Buckler's Hard Yacht Harbour will take approximately 20 minutes.

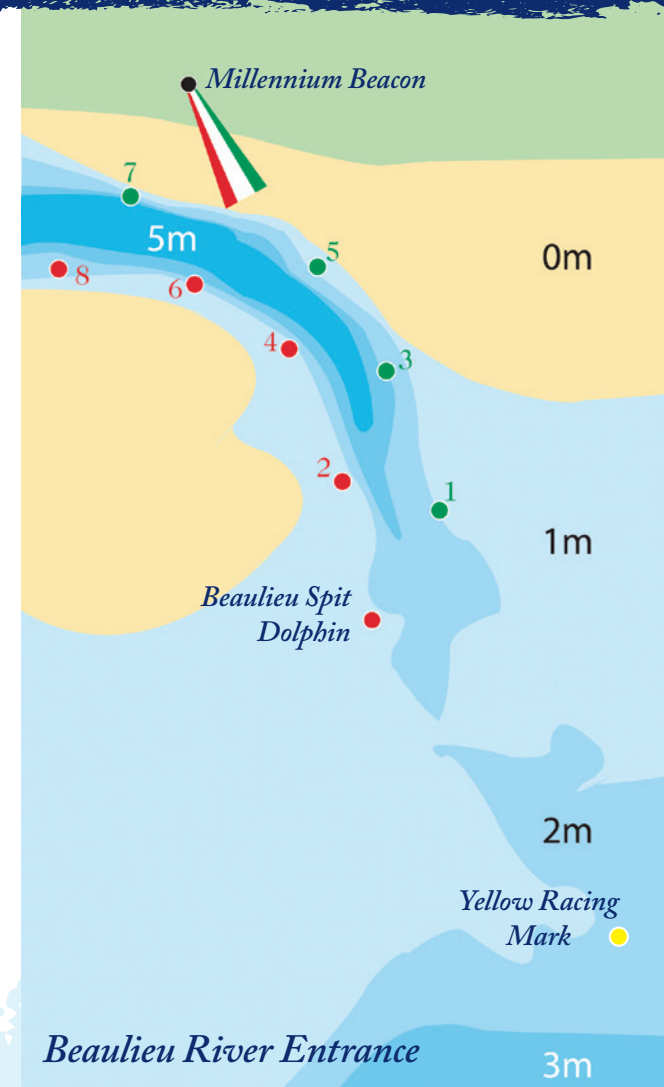
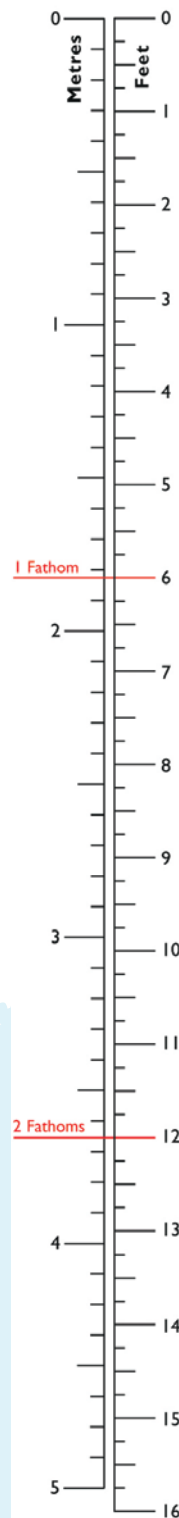
SAILING DISTANCES:

Cowes.....	2.6 Nm
Lymington.....	6 Nm
Hamble.....	5.5 Nm
Portsmouth.....	10 Nm
Chichester.....	18 Nm
Poole.....	25 Nm
Weymouth.....	45 Nm



Photo by Eva Best, shortlisted for the 2022 photographic competition.

NAVIGATION & TIDE TIMES 2023



Beaulieu Millennium Lighted Beacon:

(N13718) – G 318° – 330°,
W 330° – 337°, R 337° – 348°

Beaulieu River Entrance Lighted Beacon:

(N06630) – Fl.R. 3M 5s
Leading marks at entrance 324° must be aligned exactly due to shoal water either side of leading line. The front is Port No. 2 Pile, the rear is Lepe House.

Yellow Racing Mark:

Fl.Y.4s. 50°46'.58N, 01°21'.46W

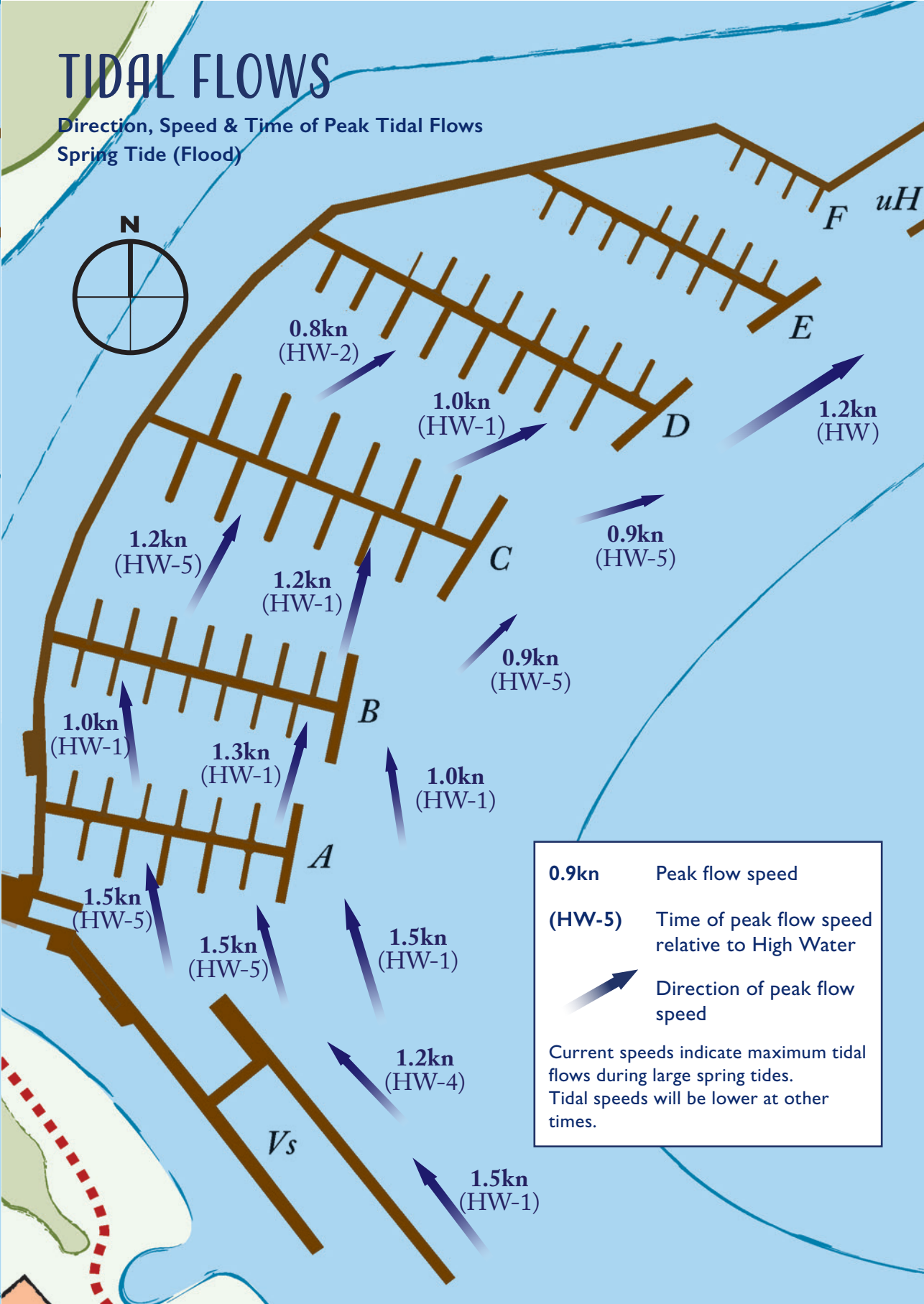
TIDAL FLOWS

Direction, Speed & Time of Peak Tidal Flows
Spring Tide (Ebb)



TIDAL FLOWS

Direction, Speed & Time of Peak Tidal Flows
Spring Tide (Flood)



0.9kn Peak flow speed

(HW-5) Time of peak flow speed relative to High Water

Direction of peak flow speed

Current speeds indicate maximum tidal flows during large spring tides. Tidal speeds will be lower at other times.

JANUARY

FEBRUARY

MARCH

APRIL

MAY

JUNE

JULY

AUGUST

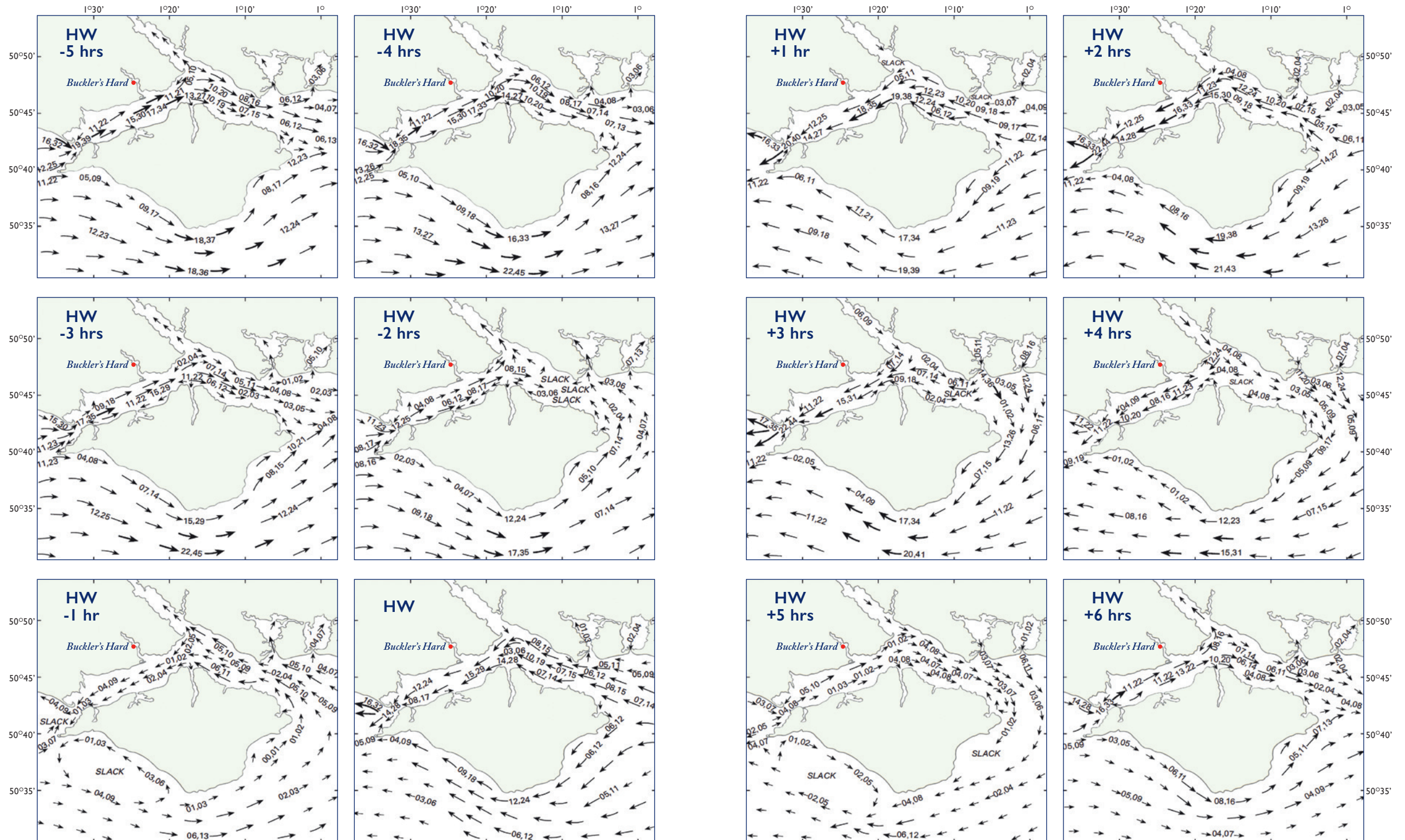
Table of tide times for 2023 from January to April. Each day entry includes a number, time, and a small letter (e.g., 1 0640 3.4 SU). Yellow shaded areas indicate British Summer Time.

Table of tide times for 2023 from May to August. Each day entry includes a number, time, and a small letter (e.g., 1 0142 1.7 M). Yellow shaded areas indicate British Summer Time.

In the approaches to and within the Western Solent double high waters occur at or near springs; on other occasions there is a stand which lasts about 2 hours. The predictions refer to the first high water when there are two and are approximate.

In the approaches to and within the Western Solent double high waters occur at or near springs; on other occasions there is a stand which lasts about 2 hours. The predictions refer to the first high water when there are two and are approximate.

SOLENT & ISLE OF WIGHT TIDAL STREAMS



High Water (HW) times refer to Portsmouth.



NEW FOREST ACTIVITIES

Offering guided canoeing and kayaking tours on the Beaulieu River since 2003, New Forest Activities is now the largest provider of outdoor activities within the New Forest National Park.

Having exclusive access to the only privately-owned river in the UK makes their guided paddling tours truly unrivalled. As well as providing lots of fun and adventure, New Forest Activities aim to educate their customers about the wonders that the Beaulieu River has to offer, including the varied flora, fauna and wildlife that calls the river home.

Couples, groups, and families with children as little as 18 months can choose from a range of canoeing and kayaking tours. Or, you can hire a kayak and head out and explore on your own.

As well as a boat load of fun on the water, New Forest Activities offer up a whole host of land-based adventures too. Why not give archery a shot during a fun, guided archery lesson on the range. Or for the thrill-seekers, their BattleZone laser tag experience is action-packed from the get-go!

If you're looking to explore a little further afield, their cycle hire centre is perfectly placed in Beaulieu, right next to the New Forest Cycle Network. They'll provide you with top quality bicycles, all the kit you'll need, and free cycle maps to get you from A to B (with a pub on route of course!)

So, if you're visiting Beaulieu for the day, or you're looking to drop anchor at Buckler's Hard and get a little closer to the water for an afternoon, an adventure with New Forest Activities is sure to tick all the boxes, whilst creating memories to treasure for a lifetime. Plus, they're open all year round!

Find out more, or book an adventure at:

01590 612377 | newforestactivities.co.uk



THINGS TO DO ASHORE

Staying on the Beaulieu River provides the perfect opportunity to hop ashore and explore the New Forest. Here are some suggestions as to how you could spend a couple of hours or days.

PLACES TO VISIT

Explore the historic village of Buckler's Hard, just a short stroll from the marina. The Buckler's Hard Visitor Centre and Museum tell the story of the village and its role in 18th century shipbuilding. Just over two miles upstream is the village of Beaulieu and the Beaulieu visitor attraction incorporating the National Motor Museum, Palace House, Beaulieu Abbey and World of Top Gear. Beaulieu River visitors receive 20% off admission to both attractions—see overleaf for further details.

7 miles to the south-west of the Beaulieu River is the Lymington River and the town of the same name. Browse the boutique shops or explore the street market held every Saturday.

The villages of Brockenhurst, Lyndhurst and Burley are within a 30-minute drive of Buckler's Hard, providing the opportunity to explore shops, cafés and restaurants.

WALKING

The New Forest is popular with walkers and has a variety of footpaths and routes to suit all abilities. For further information visit thenewforest.co.uk. Details of the walk to Beaulieu from Buckler's Hard Yacht Harbour can be found on pages 36-39.

CYCLING

Off-road cycling in the New Forest is permitted on a waymarked network of Forestry Commission tracks. Bikes can be hired from the marina via New Forest Activities. A map of authorised routes can be downloaded from newforestnpa.gov.uk

BEACH DAYS

Lepe Country Park and Calshot are good spots to sit on the beach and watch the busy Solent, or within 45 minutes by car you can be sitting on the sandy beach at Mudeford.

EAT & DRINK

The Captain's Table at the top of Buckler's Hard High Street serves hot and cold refreshments. The Master Builder's House Hotel offers casual and fine dining options and is situated within a five-minute walk of the marina. Pop-up bars and food vendors will be operating from the boatyard every weekend from Easter through to the end of September. Alternatively, there is a variety of places to eat in Beaulieu village.

EVENTS

For local events information, visit our website beaulieuriver.co.uk/things-to-do

BUCKLER'S HARD VILLAGE

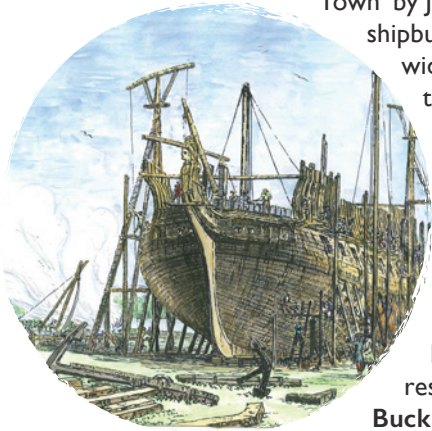


Take a short stroll from the marina into the historic riverside village of Buckler's Hard. Spend time exploring the village, learn about its role in history at the Visitor Centre & Museum, or simply soak up its peaceful atmosphere. Its timeless charm makes it the perfect escape from the hustle and bustle of everyday life.

The village is steeped in history, dating back to the 18th century. Originally named 'Montagu Town' by John, 2nd Duke of Montagu, Buckler's Hard developed into a hive of shipbuilding activity in the late 1700s. The cottages that line the unusually wide street – where logs and planks were once piled – housed tradesmen and labourers.

Buckler's Hard flourished as a naval shipbuilding centre and has become famous for building warships for Nelson's Navy, including his favourite warship HMS Agamemnon and two other vessels that took part in the Battle of Trafalgar. Shipbuilding here went into decline shortly after the Napoleonic wars, but the village has remained unspoiled by the passage of time.

Discover more about the fascinating history of the village, its residents and the ships they built by visiting the Buckler's Hard Visitor Centre and Museum at the top of the village.



Listen in on conversations between villagers of the past in the 18th century New Inn, and follow the stories of 19th and 20th century residents in an exhibition on village life. Learn about activity on the river during World War II, including the important role the village played in the D-Day landings. Marina and river visitors can claim a 20% discount on admission to the Museum*.

The opportunities to learn about the village's heritage continue on the high street. Step inside the preserved Shipwright's Cottage to get a feel for what life was like during the village's shipbuilding heyday, then visit the timber-framed Shipwrights' Workshop to see the free exhibition *HMS Agamemnon – Navigating the Legend*, telling the fascinating story of Nelson's favourite ship, that has been lost at the bottom of the ocean for over 200 years.

Don't miss the Chapel of Saint Mary, half-hidden in the middle of the west terrace. Its bell, sign and statue are the only clues to what lies within no.82. Now a place of quiet contemplation, the building was originally established as an infant school in 1846, but when closed in the 1880s a proper altar was installed and the room dedicated to St Mary. Recent excavations of its cellar suggest that the building may have once been used by smugglers.

After working up an appetite, there are plenty of places to pause for a bite to eat and drink in the village. Stop by at the Captain's Table eatery to enjoy a cooked breakfast, afternoon tea or a light lunch. Also serving all-day snacks, hot drinks and ice-creams, the eatery is open daily from 9am.

Alternatively enjoy a glass of something cold and a meal at the Master Builder's House.

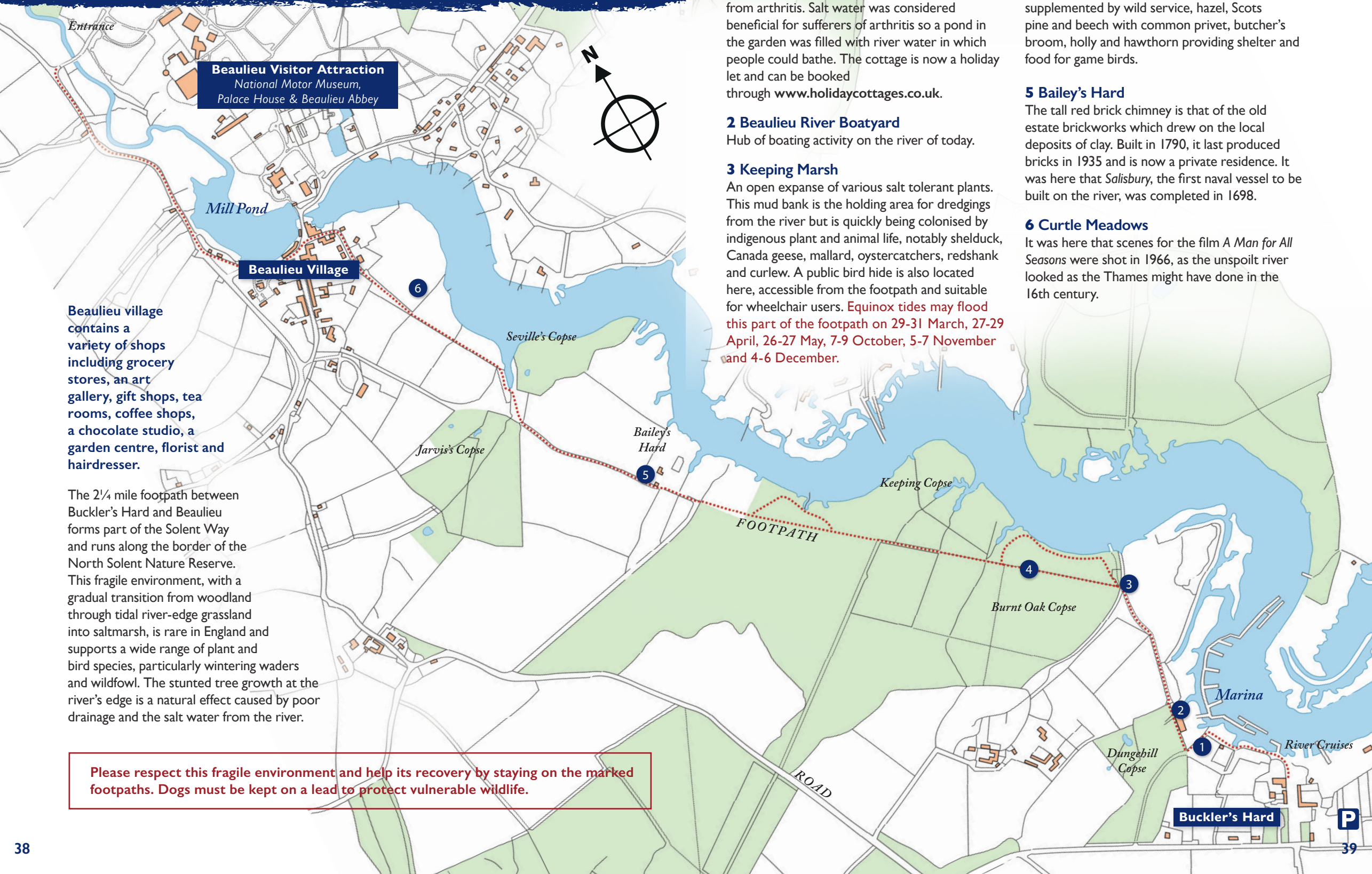
If you're looking to explore further afield, the village is also a good starting point for walkers and cyclists who can follow the Solent Way footpath that runs through the village, with nearby Beaulieu just a gentle 2¼ mile all-season stroll or cycle away.

Find out more at bucklershard.co.uk

* 20% discount is on presentation of a Beaulieu River mooring receipt. The mooring receipt must be presented within one month of issue date.



WALKING FROM BUCKLER'S HARD TO BEAULIEU



Beaulieu village contains a variety of shops including grocery stores, an art gallery, gift shops, tea rooms, coffee shops, a chocolate studio, a garden centre, florist and hairdresser.

The 2¼ mile footpath between Buckler's Hard and Beaulieu forms part of the Solent Way and runs along the border of the North Solent Nature Reserve. This fragile environment, with a gradual transition from woodland through tidal river-edge grassland into saltmarsh, is rare in England and supports a wide range of plant and bird species, particularly wintering waders and wildfowl. The stunted tree growth at the river's edge is a natural effect caused by poor drainage and the salt water from the river.

Please respect this fragile environment and help its recovery by staying on the marked footpaths. Dogs must be kept on a lead to protect vulnerable wildlife.

1 Duke's Bath House

This small thatched cottage was built by George, Duke of Montagu, c1760 for his son who suffered from arthritis. Salt water was considered beneficial for sufferers of arthritis so a pond in the garden was filled with river water in which people could bathe. The cottage is now a holiday let and can be booked through www.holidaycottages.co.uk.

2 Beaulieu River Boatyard

Hub of boating activity on the river of today.

3 Keeping Marsh

An open expanse of various salt tolerant plants. This mud bank is the holding area for dredgings from the river but is quickly being colonised by indigenous plant and animal life, notably shelduck, Canada geese, mallard, oystercatchers, redshank and curlew. A public bird hide is also located here, accessible from the footpath and suitable for wheelchair users. **Equinox tides may flood this part of the footpath on 29-31 March, 27-29 April, 26-27 May, 7-9 October, 5-7 November and 4-6 December.**

4 Burnt Oak Copse

The trees here are predominantly oak dating from the early 19th century. They were later supplemented by wild service, hazel, Scots pine and beech with common privet, butcher's broom, holly and hawthorn providing shelter and food for game birds.

5 Bailey's Hard

The tall red brick chimney is that of the old estate brickworks which drew on the local deposits of clay. Built in 1790, it last produced bricks in 1935 and is now a private residence. It was here that *Salisbury*, the first naval vessel to be built on the river, was completed in 1698.

6 Curtle Meadows

It was here that scenes for the film *A Man for All Seasons* were shot in 1966, as the unspoilt river looked as the Thames might have done in the 16th century.

BUCKLER'S HARD TO LEPE FROM THE WATER

The lower reaches of the Beaulieu River are best seen from the water as they are not served by a footpath.

1 Gilbury Pier no public access to the Exbury Estate.

2 Mulberry Dock

This is the site of the old oyster beds created in the 1870s. During the Second World War, an experimental floating dock was built here, together with components for the Mulberry Harbour, used in the D-Day landings.

3 Fiddler's Reach

In the 18th century, this was an anchoring point for the hulls of newly launched ships en route for Portsmouth. The grass that covers the mudflats along the river is called *Spartina Townsendii*. It first appeared on the river in the 1870s to help bind the mud flats, thus reducing erosion. A second variety, *Spartina Anglica*, was introduced in 1898.

4 Gins

This was where the monks of Beaulieu Abbey kept their fishing boats and trading ships. It was a convenient place to load and unload without having to navigate the narrower channel upstream. The name 'Gins' is thought to derive from 'ingenium', a lifting or winding mechanism used to move the load. Today, Gins is home to the Royal Southampton Yacht Club. An oil pipeline from Wytch Farm near Poole to Fawley Oil Refinery passes under the river at this point.

5 Sea Banks

The land behind these banks was reclaimed in the 18th century and used for salt production. Salt was a highly prized commodity and Salt Officers were based in Buckler's Hard to check that the quantity of salt produced tallied with the amount of tax paid. Two hundred years later, the banks remain intact, but they do not hold out the highest tides, and the meadows behind are periodically flooded. This provides waterfowl, particularly Brent geese and wigeon, with feeding areas in autumn and winter.

6 Needs Ore Coastguard Cottages

Built in the 1860s for the Coastguard, who were at the forefront of the fight against smuggling, as well as defence and rescue. Officers were moved around from station to station to prevent them becoming established in the local community and susceptible to bribery and collusion. The Needs Ore Station closed in 1922 but the cottages continue to be occupied by tenants of the estate.

7 Needs Ore Point

This was where Charles Bull created his 'Bull's Run' in 1726–27 as a shortcut into the river from the Solent. It was closed by a Special Act of Parliament in 1986 to protect Gull Island from erosion. Needs Ore is the base of the Beaulieu River Sailing Club whose dinghy races take place in this part of the river. Please note that the Beaulieu River Sailing Club jetty is private and landing is not permitted anywhere at Needs Ore.

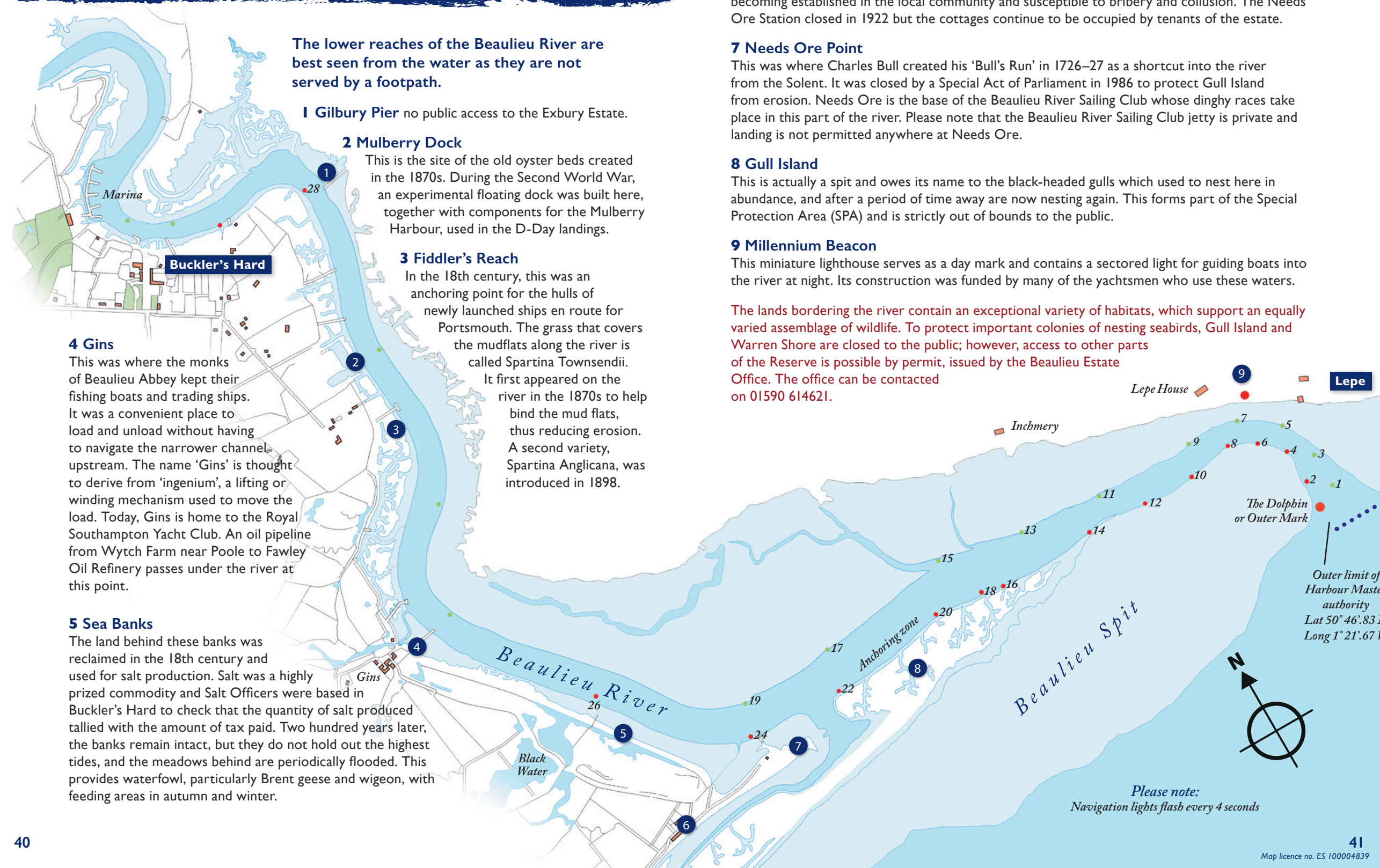
8 Gull Island

This is actually a spit and owes its name to the black-headed gulls which used to nest here in abundance, and after a period of time away are now nesting again. This forms part of the Special Protection Area (SPA) and is strictly out of bounds to the public.

9 Millennium Beacon

This miniature lighthouse serves as a day mark and contains a sectored light for guiding boats into the river at night. Its construction was funded by many of the yachtsmen who use these waters.

The lands bordering the river contain an exceptional variety of habitats, which support an equally varied assemblage of wildlife. To protect important colonies of nesting seabirds, Gull Island and Warren Shore are closed to the public; however, access to other parts of the Reserve is possible by permit, issued by the Beaulieu Estate Office. The office can be contacted on 01590 614621.





VISIT BEAULIEU

Just two miles upstream from Buckler's Hard is Beaulieu, a marvellous day out to enjoy together. The attraction includes the National Motor Museum, Palace House, Beaulieu Abbey, World of Top Gear, Little Beaulieu and much more.

The National Motor Museum is home to a world-famous collection of over 285 vehicles and celebrates 140 years of ingenuity, imagination, and engineering genius. Marvel at cars that broke World Land Speed Records, uncover a rustic 1930s garage, packed full of artefacts from a bygone age, and relive favourite TV moments in World of Top Gear. For a bird's eye view, a monorail ride through the roof of the museum is a must!

Palace House, home of the Montagu family since 1538, is filled with family treasures and stories. Hear the tragic tale of the lady who inspired the Rolls-Royce mascot and the aunt who risked it all as a spy. The house will become the backdrop for incredible sculptures this summer as Sculpture at Beaulieu returns following its previous success in 2019 and 2021.

From the Mill Pond walk, the Victorian Flower and Kitchen Gardens to the Wilderness Garden and Alice's Topiary Wonderland, Beaulieu's beautiful outdoor spaces won't disappoint. Green fingered enthusiasts won't want to miss BBC Gardeners' World Spring Fair, which returns to the Beaulieu showground from 28 – 30 April 2023. The Spring Fair will showcase beautiful borders, floral displays from top nurseries, live entertainment and much more.

For younger visitors, Little Beaulieu is the perfect place for them to explore, with adventure around every corner. Clamber around a wooden replica of Palace House, uncover secret passageways and ride the zip wire. And while the kids wear themselves out, parents can enjoy a tea or coffee with a slice of cake at the perfectly placed cafe!

Experience the serenity of Beaulieu Abbey and learn what life was like for the monks who lived there over 800 years ago. Then, in the Secret Army Exhibition, discover Beaulieu's wartime secrets as the 'Finishing School' for the heroic Special Operations Executive. Learn about the remarkable agents who trained on the Beaulieu Estate before risking their lives on dangerous covert missions in Europe during World War Two.

A ticket to Beaulieu includes entrance to everything the attraction has to offer. What unforgettable memories will you make during your visit?

01590 612345 | beaulieu.co.uk



MASTER BUILDER'S HOUSE

BUCKLER'S HARD

Our 2023 opening times



From casual meals in our Yachtsman's Bar, à la carte dining in our restaurant, to the outside Crew Bar BBQ in the summer, we have your lunch and dinner sorted, all year round.

1 Oct 2022 - 31 Mar 2023

Restaurant & Yachtsman's bar

Every day - 12-2.30pm - 5.30-9pm, including Sunday lunches 12-2.30

1 Apr - 31 Sept 2023

Restaurant Every day - 12-3pm - 6-9pm, including Sunday lunches 12pm-3pm

Yachtsman's Bar Every day - 6-9pm

Crew Bar - 12-5

1 Apr - 30 Jun Weekends & Bank Holidays (7, 10 April and 1, 8, 29 May)

1 July - 3 Sept Everyday

3 - 31 Sept Weekends only

Buckler's Hard, Beaulieu Estate Hampshire, SO42 7XB
01590 616253

SCAN THE QR CODE TO BOOK A TABLE

Please note, the outside Crew Bar opening times are weather dependent, so please phone ahead to avoid disappointment if the weather is looking rather unpredictable!



Jolly Roger
Sailing



Available Courses

Tel: 07834 73 33 23

Visit: www.jollyrogersailing.co.uk

Day Skipper Theory
from £349

A comprehensive introduction to cruising for inexperienced skippers. Equips you with enough knowledge to navigate around familiar waters by day.

Yachtmaster & Coastal Theory
from £379

Advanced training for more experienced skippers building on the Day Skipper course

Essential Navigation & Seamanship
from £149

A great introduction to navigation and safety awareness for new or inexperienced skippers and crew.

Own Boat Tuition
£POA

You may be new to sailing and wish to learn the basics, or you may want to further your knowledge of boat operations bespoke to your vessel.

Short Range radio Course (VHF)
from £99

Enabling you to gain the minimum required legal licence to operate VHF & DSC on any vessel.

First Aid
from £89

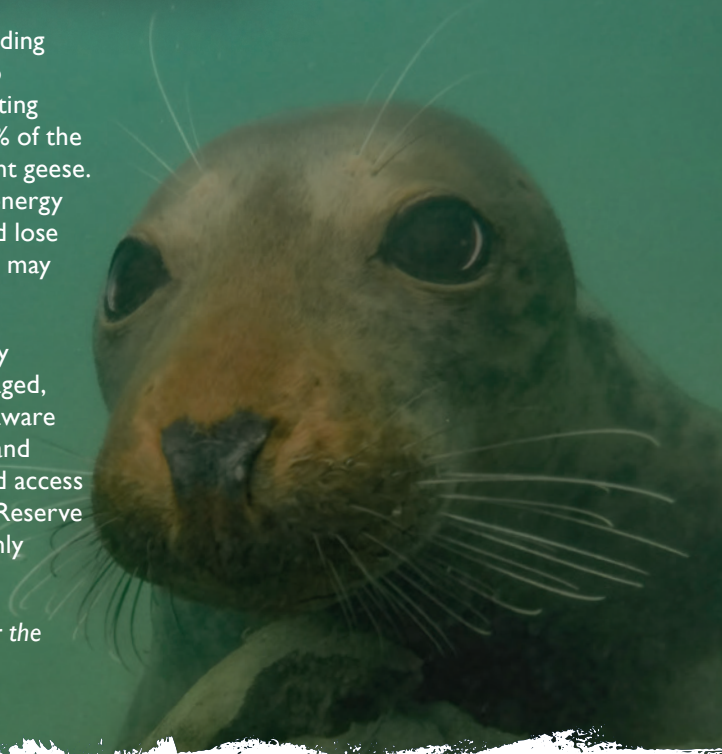
A one day course designed to take in many regular first aid topics. This is an essential course for anybody venturing to remote locations on the seas.

HELP PROTECT OUR WILDLIFE

The Beaulieu River is an important feeding ground and lifeline for birds with up to 125,000 wildfowl and wading birds visiting each winter; the Solent is home to 10% of the world's population of dark-bellied Brent geese. When they're disturbed, birds waste energy escaping from the perceived threat and lose valuable feeding or resting time, which may mean they don't survive to migration.

Disturbance often happens accidentally because the birds are so well camouflaged, so please help protect them by being aware of your surroundings. Follow all signs and remember that dogs are not permitted access to the North Solent National Nature Reserve under any circumstances. Landing is only permitted at designated points.

Picture by Richard Holgate, shortlisted for the 2022 photographic competition



ROC MARINE SOLUTIONS

Marine repair and retrofit specialists

rocmarinesolutions.com

07557028996

OCEAN RIGGING

MARINE | INDUSTRIAL | ARCHITECTURAL

RIGGING SERVICES:

- Servicing & Replacement of Rigging
- Splicing & Rope Work
- Swaging
- Rig Checks & Reports
- Winch & Deck Gear Servicing & Supply
- Standing rigging - Wire & Rod
- Sheets, Halyards & all Running Rigging
- Dock lines, Mooring Warps and Anchor Chain
- Shackles, Blocks & Running Hardware
- Furling & Reefing Systems
- Masts, Booms, Poles in Aluminium & Carbon

INDUSTRIAL / ARCHITECTURAL:

- Balustrades for stairs, balconies, decking and patios.

GAS SERVICES:

- Gas Safety Checks
- Gas Systems and Cookers



01590 676 292 | Email: info@oceanrigging.co.uk | www.oceanrigging.co.uk

OCEAN RIGGING | Lymington Yacht Haven, Kings Saltern Road, Lymington SO41 3QD

2022 PHOTO COMPETITION

Congratulations to Maggie White, the winner for 2022, for this photograph.

We now invite entries for the 2023 competition. This year, we'd like entrants to capture what makes the Beaulieu River special to you. The winning photographer will win a cash prize of £200.

For more information, visit beaulieuriver.co.uk/photo-competition



HMS AGAMEMNON - NAVIGATING THE LEGEND

HMS *Agamemnon* (1781), 64 guns, is the most famous of all the ships built at Buckler's Hard. She has great archaeological and historical significance as the only known surviving wreck of her kind in the world and to have been under the command of Nelson for three and a half years. She saw action in many famous sea battles including the Battle of Trafalgar in 1805.

In March 2022 Mary Montagu-Scott from Buckler's Hard and a team of leading maritime archaeologists from the UK went to Uruguay to start a project to survey the wreck of HMS *Agamemnon*. They partnered with OCEANIDS, a group of Maritime Archaeologists in Uruguay who had been monitoring the wreck for some time and brought to the attention of the maritime heritage community that the shipwreck was now at severe risk.

The ship sank in 1809 in Maldonado Bay, off Punta Del Este, and although re-discovered in 1993, had never had any formal archaeological survey of her condition. Due to changes in the marine environment, an invasive predatory species of whelk, or sea snail, from the Indo-Pacific, *Rapana Venosa*, has eaten the mussels that had covered the wreck for 200 years. The mussels were a form of protection as they formed a hard shell over the wood and therefore played a critical part in her preservation up until now from the *Teredo Navalis*, the naval shipworm.

The wreck is currently exposed with no remaining mussels and so a joint project between Uruguay and the UK has started in order to survey the wreck before she is lost forever. She is vulnerable not only to decay but also to treasure hunters who illegally seek to remove artefacts.

It is hoped that in March 2023, the team will return to dive on the wreck and record a detailed survey of her condition. The wreck is still owned by the Royal Navy but as she sits in the territorial waters of Uruguay, all work will be in partnership with the Uruguayan authorities as shared cultural heritage. It is not intended to raise the wreck but to carry out a pre-disturbance survey including geophysics, photogrammetry and diver inspection that can inform us how to record and preserve what we can for the future.

There is a free exhibition and film *HMS Agamemnon – Navigating the Legend* in the Shipwright's workshop in Buckler's Hard Village open every day.

- ⚓ 3rd Ardent Class, designed by Sir Thomas Slade
- ⚓ launched 10th April 1781
- ⚓ Elmwood keel 132 feet long, laid down 1771
- ⚓ gun deck 160 ft
- ⚓ breadth 44ft
- ⚓ 2000 loads of timber from 40 acres of woods
- ⚓ 85% oak, other wood elm, beech
- ⚓ 35 tons of copper nails and bolts
- ⚓ 100 tons of wrought iron fittings
- ⚓ displacement 2578 tons
- ⚓ draft aft 22'
- ⚓ iron ballast of 100 tons. Later reduced 70 tons
- ⚓ gundeck 26 x 24 pounders
- ⚓ upper deck 26 x 18 pounders
- ⚓ quarter deck 10 x 9 pounders
- ⚓ forecastle 2 x 9 pounders
- ⚓ 3 masts fore, main, mizzen total of 21 sails
- ⚓ cost to admiralty was £20,579
- ⚓ full complement of 491 men 141 marines

S.D. ELECTRONICS

MR STEPHEN EASTAUGH - MARINE ELECTRONICS ENGINEER

07551 949083 • eastough.pipistrelle@talktalk.net
7 Park Lane, Alderholt, Fordingbridge, Dorset, SP6 3AJ

INSTALLATION • REPAIR AND SERVICING OF ELECTRICAL SYSTEMS • WINTER REFURBISHMENTS
CHECKING AND CONNECTING ELECTRONICS ON LAUNCH • CHECKING BATTERIES
REPAIR OF ELECTRIC WINCHES AND BOW THRUSTER • SERVICING MASTHEAD UNITS
ALTERNATOR CHECKS AND STARTER MOTOR REPAIRS





Aqua Yachts

Passion, Perfection, Performance



- Polishing & Waxing
- Antifouling
- Stern Gear Refurbishment
- Teak Cleaning, Renovation & Restoration
- Exterior & Interior Valeting
- Anodes
- Marine Electronics
- Plumbing Systems
- Marine Engineering
- Yacht Management
- Sale & Purchase Support

Where we operate: Lymington, Christchurch, Poole, Beaulieu, Hythe, Southampton, Hamble
 aquayachts.co.uk • info@aquayachts.co.uk • 07950928182



- Yacht Management - Polishing and Waxing
- Antifouling - Regular Exterior Cleaning - Anode Replacement
- Stern Gear Refurbishment - Teak Renovation - Interior Cleaning
- For Sale Preparation - General Maintenance
-  AGlaze Approved Applicators



Contact us for all your Yacht Care needs:



www.solentyachtcare.co.uk
 Office: 01590 719587

enquiries@solentyachtcare.co.uk
 Mobile: 07917 543877



BIRDS ON THE RIVER

No matter what time of year or state of the tide, there are always interesting birds to see on the river. Grey herons stalk the banks, along with white egrets – the little egret is common and in recent years a few great white egrets have also occurred. Kingfishers are often present but these are shy and harder to see. Great crested and little grebes occur in winter, along with the rarer Slavonian grebe closer to the river mouth.

Cormorants occupy the river from the Mill Pond downstream to the sea. In winter an attractive diving duck from the north, the red-breasted merganser, comes in to the estuary to catch fish. On the Solent, sturdy sea duck such as eider and scoter can also be seen.

Mallard is the most common duck in summer and you may be fortunate enough to see a line of golden brown-coloured ducklings following a female. In winter big numbers of teal fly in from Iceland, Scandinavia and Russia, to over-winter on the river. Wigeon from Scandinavia and Russia can also be common during the colder months. Shelduck and their near relative the Egyptian goose are present during most of the year. In winter the resident Canada geese are joined by large flocks of dark-bellied Brent geese from Russia.

The most common waders feeding and resting on the river banks are curlew, oystercatcher, redshank and lapwing. These all nest locally in summer but their numbers increase from September onwards as migrant waders from northern parts of the UK and the Arctic join our local birds. Some of these long-distance migrants will just be stopping off to feed up prior to

moving on to over-winter in Africa. However big flocks of waders, such as black-tailed godwits from Iceland and golden plover from Scandinavia remain along the river until the following spring.

Since 2007 avocets have been nesting locally and throughout the year avocets may be seen feeding in the creeks or resting on the banks, especially near the mouth of the estuary. Outside the breeding season spoonbills have become regular visitors in small numbers in that same part of the river.

An exciting range of birds of prey visit the river and surrounding woodlands. By far the most common species is buzzard, which can be seen floating overhead or heard mewing from an exposed branch of a bankside tree. Sparrowhawk and kestrel are reasonably common too and a hobby may be seen in summer. There are also goshawks and peregrines and these two are capable of taking duck and waders. Therefore, if you notice wildfowl and waders suddenly scattering, it is worth looking around to try to find the cause, which is likely to be one of the larger raptors.

Marsh harriers occur in the more open sections lower down the river. The harriers are quite distinctive, as they are large and float in an owl-like manner low over the saltmarsh and reeds. In spring and autumn the river is visited by one or two ospreys. These spend winter in Africa but return to breed in northern parts of the UK and Scandinavia. The Beaulieu River offers these unique raptors an excellent place to fish and rest. In recent years white-tailed eagles (also known as sea eagles) have been introduced on the nearby Isle of Wight and several of these birds use the river to hunt. Their immense size and short-tailed appearance make them easy to identify.

The bankside vegetation supports a host of interesting smaller birds. These can be seen from the Riverside Walk, which stretches upstream on the western bank from Bucklers Hard, and from the public bird hide at Keeping Marsh. Warblers from Africa and Spain spend the summer nesting here and large numbers pass through on migration in spring and autumn. Those nesting include reed warbler, blackcap, garden warbler and chiffchaff. All of which add to the wonderful sound of bird song throughout the spring and early summer.

Some of the woodland clearings support nightjars which arrive from Africa to breed. The males can be heard giving their extraordinary mechanical churring song at dusk and dawn. Firecrest and marsh tit are among the resident species nesting in the woodlands beside the river. Flocks of colourful siskins and goldfinches are often present, whilst the more secretive bullfinch is usually there too but may only give its presence away by its soft creaking call.

Graham Giddens

*Freelance Ornithologist
and Bird Watching Guide*





USEFUL CONTACT NUMBERS

Harbour Master's Office	01590 616200 / harbour.office@beaulieu.co.uk
Buckler's Hard Visitor Centre & Museum.....	01590 616203
Car Hire – SHB Hire Ltd (Romsey).....	01794 511458
Casualty – Lymington Hospital.....	01590 663000
Urgent Treatment Ctr – Lymington Hospital.....	01590 663101
Customs – National Yacht Line.....	0300 123 2012
RS Divers.....	023 9319 0409
Doctors – Waterfront & Solent Surgery.....	023 8084 1841
Trafalgar Dental Practice.....	023 8089 1936
National Motor Museum visitor enquiries	01590 612345
Police (non-emergency).....	101
Royal Southampton Yacht Club, Gins Clubhouse...	02380 223352 (option 1)
Seadown Veterinary Group (Hythe branch).....	02380 842237
Tourist Information.....	thenewforest.co.uk


SOLENT HARBOUR OFFICES

Lymington.....	01590 672014
Cowes.....	01983 293952
Hamble.....	01489 576387
Yarmouth.....	01983 760321

LOCAL TAXI SERVICES

Marchwood Motorways.....	02380 842929
Harvey's Taxi	07770 722522
OC Cars (7 Seaters available).....	07789 121749
Station Taxis Brockenhurst.....	07708 866844 / 01590 545454


For a more comprehensive list please see our notice board.





LYMINGTON HARBOUR


ONLY A STEP AWAY...

Beautiful Georgian Town
New Forest Activities
Fantastic Dining Experiences
Things To See & Do










CHARMING HARBOUR WITH FIRST CLASS MOORING FACILITIES

NEW IN 2022
refurbished shower & washroom facilities at Town Quay

LET'S GET SOCIAL



Find out more:
WWW.LYMINGTONHARBOUR.CO.UK
INFO@LYMINGTONHARBOUR.CO.UK
01590 672014



MARINETEC Ltd

**Professional and Quality Marine
Engineering Services based at
Bucklers Hard Yacht Harbour**



**Inboard & Outboard Engine
Service & Repair**

Engine Diagnostics

New Engines Supplied & Fitted

General Boat Systems

**Authorised Dealer for
Sole Diesel & Hyundai Seasall**

**07717 155871
info@marine-tec.co.uk
www.marine-tec.co.uk**

**Bucklers Hard Yacht Harbour,
Beaulieu, Hampshire, SO42 7XB**

